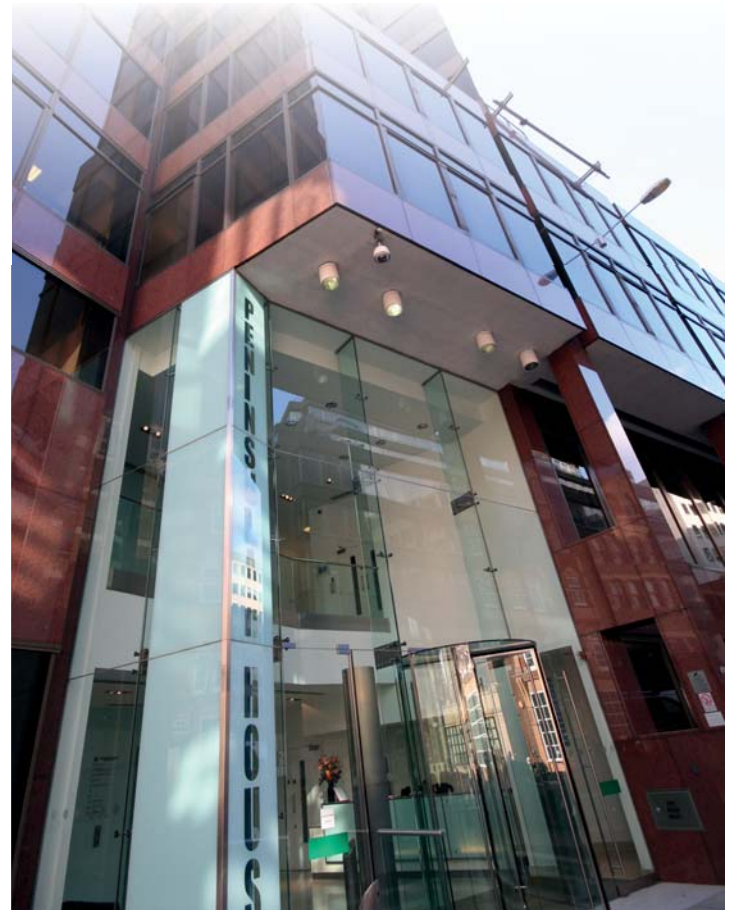


# Bespoke meeting venue in the City of London



# Venue facilities in the heart of the City





Based in the City of London, close to Monument, the **ifs** *School of Finance* is at the centre of London's financial district, and within easy access of major London train stations, bus routes and underground links.

Our venue provides exclusive and modern meeting rooms, in a spectacular environment. Fully air conditioned, with an abundance of natural light, these meeting rooms offer convenience and privacy, whilst incorporating state-of-the-art audio-visual and conference equipment.

Our team has years of event experience so whether it is a drinks reception, team event, training course or evening seminar we guarantee all your requirements will be met and expectations exceeded. Our priority is to provide you with first-class facilities and support, to ensure your meeting or event is a great success.

To really appreciate the location, views and flexibility of our venue, please call our venue manager on +44 (0)207 444 7112 or email [venuehire@ifslearning.ac.uk](mailto:venuehire@ifslearning.ac.uk) to book or arrange a viewing.

Our venue features seven individual meeting rooms, a separate *ifs e-test*™ centre and breakout areas, providing a truly flexible meeting space.

The individual rooms can be adapted to accommodate between 8 to 100 delegates, with interconnecting rooms allowing maximum flexibility to meet any requirement.

The breakout area, with its inspiring views overlooking London and the River Thames, is an ideal location for networking events and for a truly breathtaking experience, the whole floor can be hired out for a day or evening event.

Each meeting room includes interactive SMART™ technology, PA systems and DVD capability.



Classroom 1



Classroom 3



Boardroom



Classroom 2



Classroom 4

“I am very impressed with the *ifs* School of Finance training facilities. They are not just ‘state of the art’, but have inbuilt flexibility to cater for small to large groups of delegates. They are superbly situated for ease of access.”

Richard Lowrie FCIB,  
Director, F S Insight Ltd

# Venue



Classroom 5



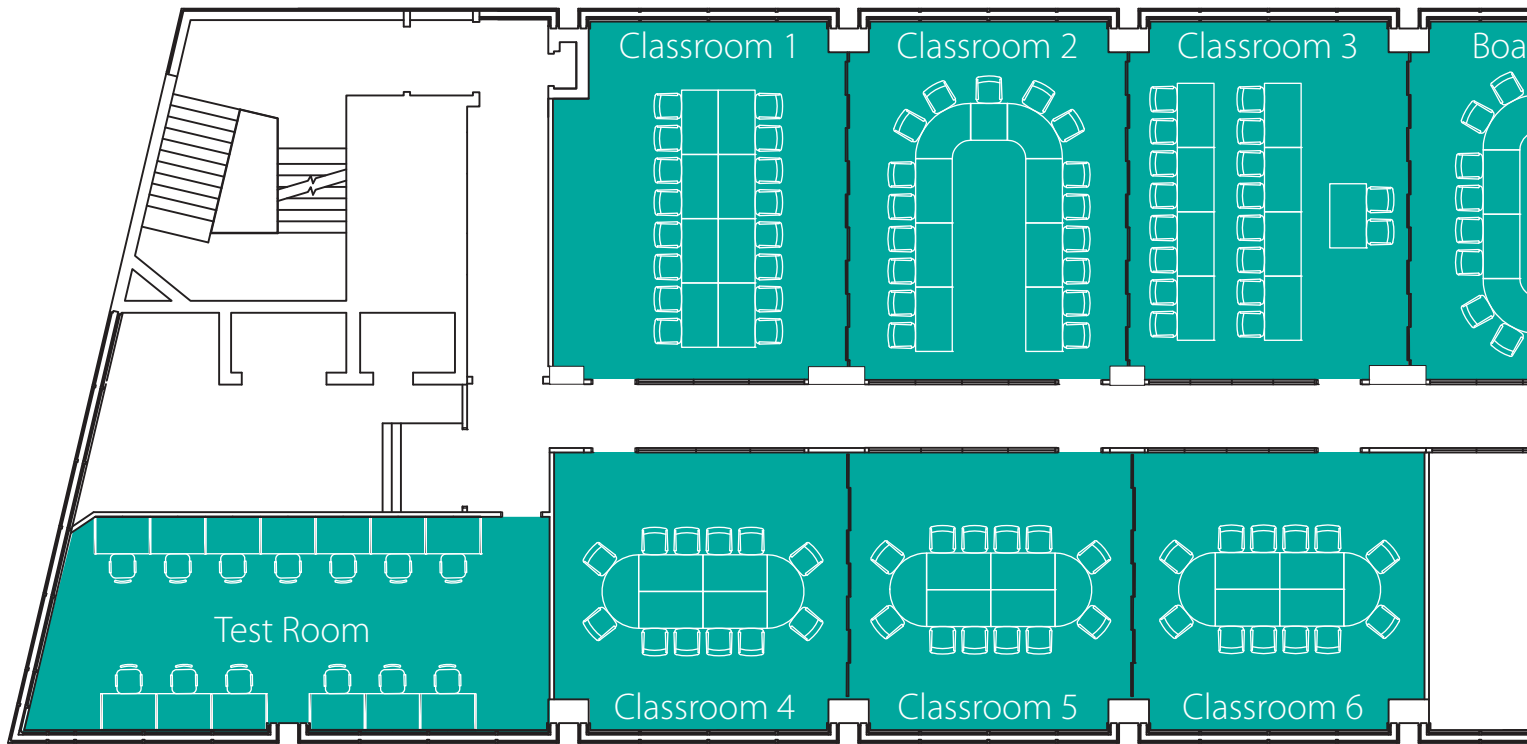
Classrooms 1, 2, 3 and Boardroom combined



Classroom 6

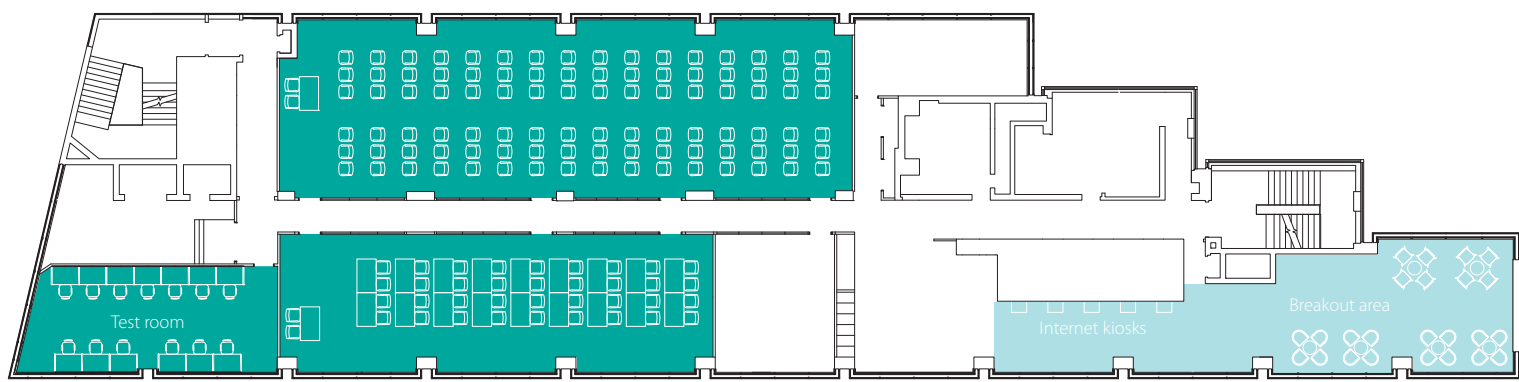
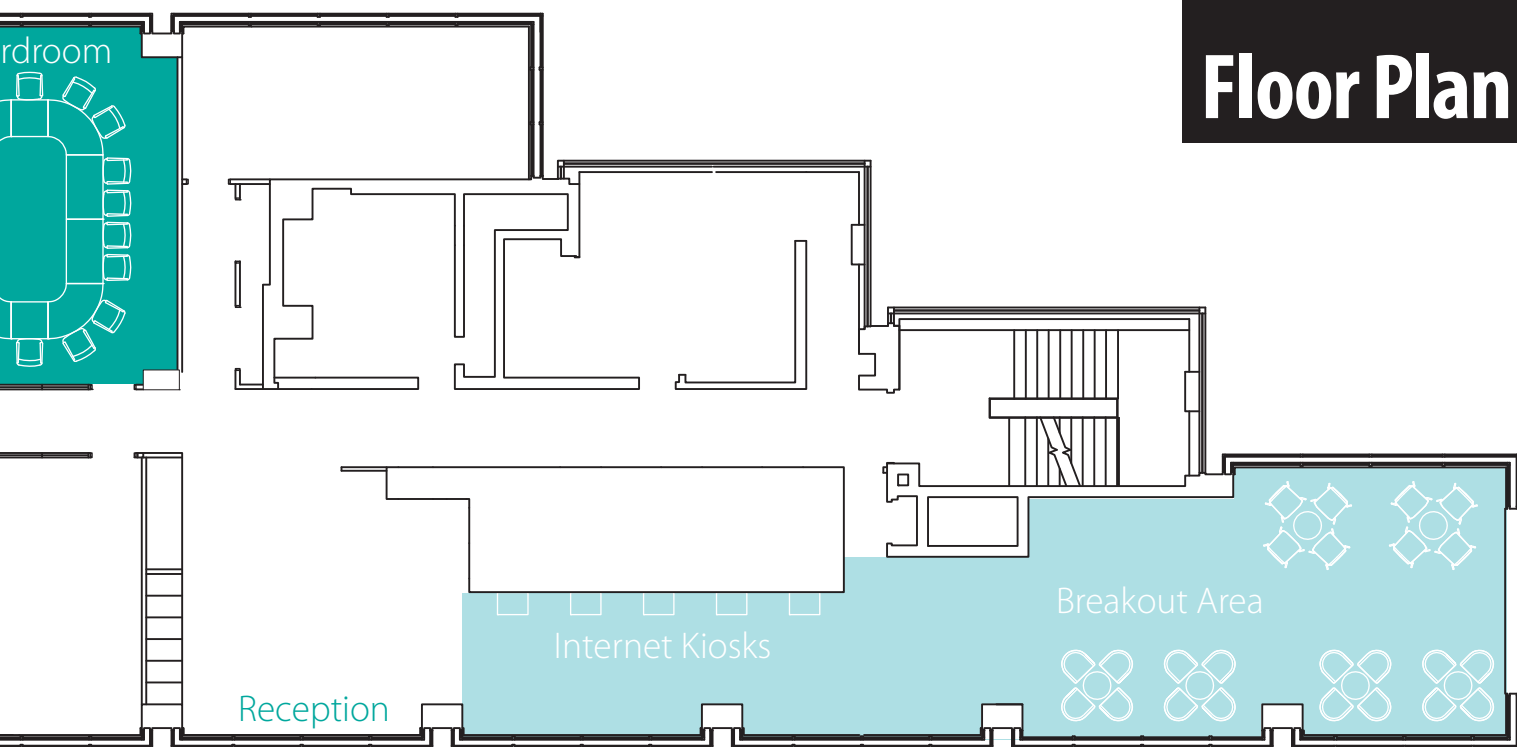


Latest SMART™ technology



Room	Dimensions	Capacity		
		Boardroom	Theatre	Classroom
Boardroom: <i>Epicurus</i>	6.0m x 7.8m	18	20	18
Classroom 1: <i>Democritus</i>	6.3m x 7.8m	16	25	18
Classroom 2: <i>Socrates</i>	6.0m x 7.8m	17	20	18
Classroom 3: <i>Gorgias of Leontini</i>	6.0m x 7.8m	16	25	18
Classroom 4: <i>Anaxagoras</i>	6.3m x 6.0m	12	15	12
Classroom 5: <i>Pythagoras</i>	6.0m x 6.0m	12	12	8
Classroom 6: <i>Thales of Miletus</i>	6.3m x 6.0m	12	15	12
Classroom 1 & Boardroom	12.4m x 7.8m	26	50	32
Classroom 1, 2 & Boardroom	18.5m x 7.8m	-	75	48
Classroom 1, 2, 3 & Boardroom	24.7m x 7.8m	-	100	64
Classroom 2 & 3	12.1m x 7.8m	26	50	32
Classroom 4 & 5	12.4m x 6.0m	26	30	28
Classroom 4, 5 & 6	18.8m x 6.0m	-	45	40
Test Room: <i>Archimedes</i>	11.4m x 4.6m (at widest length)	13 individual computers		

# Floor Plan



Rooms are interconnecting so can accommodate between 8 - 100 delegates for maximum flexibility. Please contact us for rates tailored to your needs.

# Test Centre



Our separate, bespoke test room is also available for your use. With 13 computers this room is ideal for e-testing or for sessions requiring individual computer access.

“The venue provided ample space and up-to-date technology to deliver a really great event. On-site support was great and everything ran smoothly.”

Barclays Bank PLC





# Catering

A selection of refreshments can be made available within the breakout areas. We can also offer you a variety of menu options. To discuss your individual catering requirements, please email [venuehire@ifsllearning.ac.uk](mailto:venuehire@ifsllearning.ac.uk) to contact our venue manager.



# Contact us

We have a dedicated team on-site who are happy to discuss your requirements, organise a booking, or arrange a viewing.

To really appreciate the location, views and flexibility of our campus, please contact us on the details below.

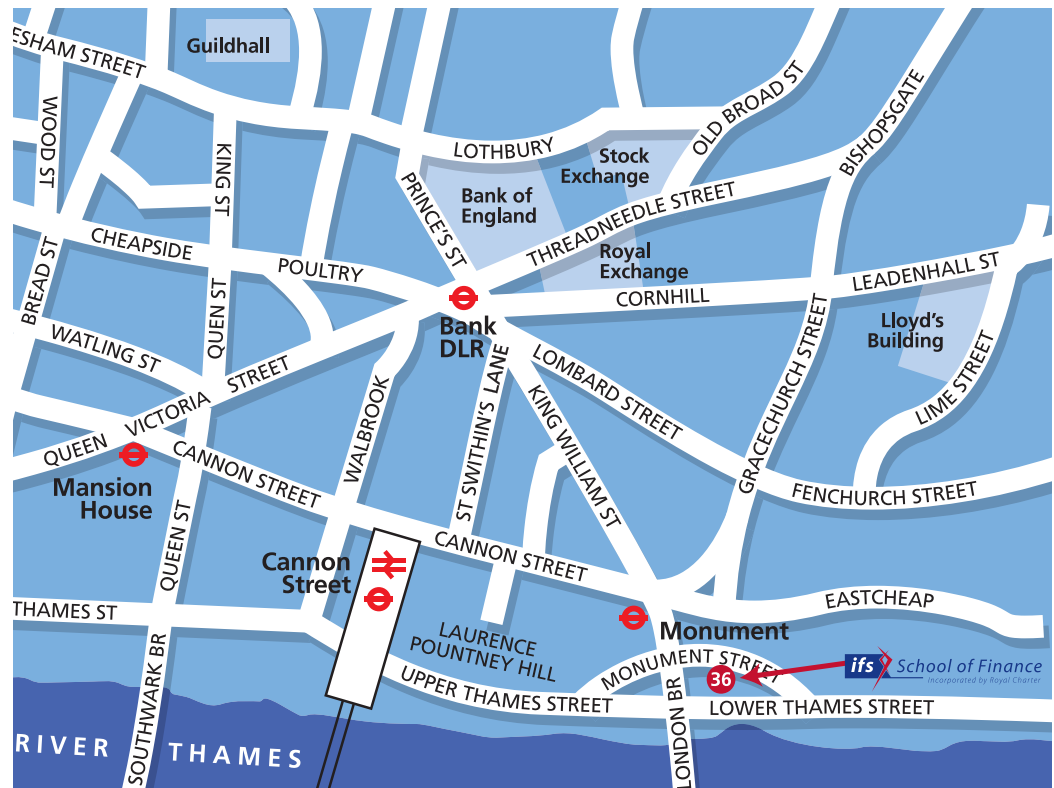
8th Floor, Peninsular House,  
36 Monument Street, London EC3R 8LJ

**T** +44 (0) 207 444 7112

**F** +44 (0) 207 444 7115

**E** [venuehire@ifsllearning.ac.uk](mailto:venuehire@ifsllearning.ac.uk)

**W** [www.ifsllearning.ac.uk/venuehire](http://www.ifsllearning.ac.uk/venuehire)



# How to find us

By London Underground: Cannon Street, Monument, Bank, Mansion House and London Bridge underground stations are a short walk away.

By rail: London Bridge and Cannon Street train stations are approximately ten minutes away by foot. Other main stations are easily accessible via bus or underground.

By bus: Various bus routes are located nearby, providing good connections within the City.

By air: London City Airport, the UK's leading business airport, is within easy reach of our venue, providing both UK and international flights. The Stansted Express provides regular services between Stansted airport and London Liverpool Street train station.



The *ifs School of Finance* is a registered charity, incorporated by Royal Charter, and one of the leading bodies for the provision of financial education and lifelong career support to both the financial services industry and the wider community. Our provision includes formal qualifications from GCSE equivalent through to post graduate degree level.

Our vision is to be recognised as a world-class School of Finance, known for its quality and innovative approach as the provider of choice for financial learning, both as an essential life skill and for a career in the financial services sector.

Through this, the *ifs School of Finance* will contribute to the development of both a well-educated and skilled financial services industry, able to meet the needs of the public at large, and more financially aware and literate consumers who are able to take control of their own financial futures.

*ifs School of Finance*  
8th Floor, Peninsular House  
36 Monument Street  
London EC3R 8LJ  
United Kingdom

**T** +44 (0)20 7444 7111  
**F** +44 (0)20 7444 7115

*ifs School of Finance*  
*ifs* House, 4–9 Burgate Lane  
Canterbury, Kent CT1 2XJ  
United Kingdom

**T** +44 (0)1227 818609  
**F** +44 (0)1227 786030  
**E** [customerservices@ifslearning.ac.uk](mailto:customerservices@ifslearning.ac.uk)  
**W** [www.ifslearning.ac.uk](http://www.ifslearning.ac.uk)

